



Independence Junction 2006  
Philadelphia, PA  
National Model Railroad Convention  
July 2 to July 9, 2006



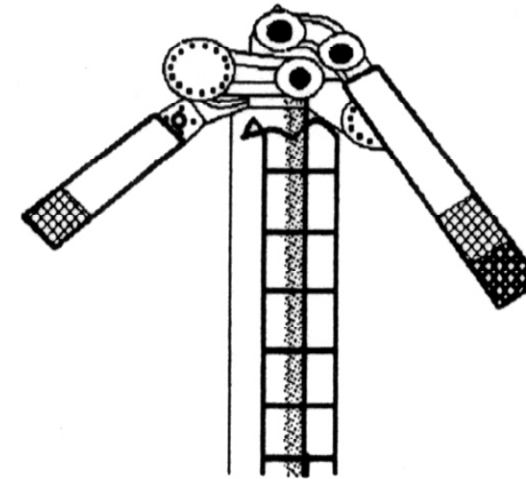
This year the NMRA National Convention returns to our area and the Club is one of the featured layout tours ("The Manhattan Limited"). One tour is scheduled: Saturday, July 8. That day the bus will depart Philadelphia at 8 am and arrive at the Club between 10 and 10:30 am, with a departure time back to Philadelphia of 2:30 pm. At least two bus loads of visitors are expected and we would like to have as many members as possible on hand to help support the Club. Please contact Ray Russell or Martin Harriss.

**Clearboard Deadlines:**

July/August 2006 Issue: July 22, 2006. To be distributed August 12, 2006.  
September 2006 issue: September 9, 2006. To be distributed September 23, 2006.

**THE CLEARBOARD**  
PO Box 1146  
Union, NJ 07083-1146

**FIRST CLASS MAIL**



*The*  
**CLEARBOARD**

*The Official Publication of The Model Railroad Club, Inc*

- Hudson, Delaware & Ohio Railroad
- Trenton Northern Transportation & Light Company
- Rahway River Railroad
- Mauch Chunk Terminal Railroad
- Jersey Shore & Western Railroad
- Public Service Interurban Rapid Transit Company

*"Information and Ideas, By and For Our Members."*

Issue # 465

June 2006



Member John Partridge changing poles of trolley #2001 under the watchful eye of a museum member during the Membership Day at the Shore Line Trolley Museum in East Haven, CT. back on April 29 of this year. Photo by Carlos Langezaal.

# The CLEARBOARD

**EDITOR:** Carlos Langezaal  
**COPY EDITOR:** Bob Nalbhone

**CONTRIBUTING EDITORS:**  
Eric Callender, Martin  
Harriss, Mike Bowler, Bob  
Nalbhone

**PRODUCTION &  
DISTRIBUTION:** Bill Jambor

*The Clearboard is published 12 times a year by  
The Model Railroad Club, Inc. P.O. Box 1146,  
Union, NJ 07083-1146.*

## SUBMITTING ARTICLES & EDITORIAL POLICY

The Editors of *The Clearboard* welcome articles and photographs submitted by members. We will try to publish articles in a timely manner. When submitting an article for publication in *The Clearboard*, we ask that you follow these procedures:

- The Board of Director's requires all articles to be bylined. No anonymous submissions will be published.
- We prefer computer disk files to typewritten or handwritten pages. All typewritten and handwritten submissions must be double-spaced with one-inch margins on either side.
- If you submit an article by disk, we prefer Word 2000 format, but we can use submissions saved as text files.
- Include, if possible, a hard copy of the article. If we destroy your disk, we are willing to put in the effort to retype your article if we have something to type from.
- You may email articles to [crhlk@comcast.net](mailto:crhlk@comcast.net). Scanning services for photographs are available. Submit photographs in *The Clearboard* editor's box
- All editorials are the opinions of the author, and do not necessarily reflect the official position of the Club or the Board of Directors

©2006 The Model Railroad Club, Inc.  
All Rights Reserved.

## CONTENTS

### From the Editor

3

### Departmental News

#### JS&W News



4

#### HO News



5

### Contributions

#### N scale and Physical Differences between Scales

6

#### Tall Timber



7

#### Club News

#### Visit to the Shoreline Trolley Museum



10

### Club Information

#### Summary HO quarterly Dept Meeting

12

#### Summary BOD April & May meetings

12

details, please consult the reports directly. Copies of the detailed report are also available from the Treasurer at the Club. No outstanding items of significance were noted by the BOD during the review of the documents.

N Scale – A written annual report was delivered by Eric. A copy of which was placed on file with the Secretary. No outstanding items of significance were noted by the BOD during the review of the documents. Work on the library was discussed, as well as preparations for the Annual NMRA meeting visit. Also was discussed the attendance and participation in the N-scale operations during the “Op till you drop” session of May 6.

HO Department – A written report was delivered by Martin. A copy of which was placed on file with the Secretary. No outstanding items of significance were noted by the BOD during the review of the documents. The “Op till you drop” session of May 6 was discussed. We had a good turn out and it went smoothly.

Membership - A membership report was delivered by Mike Bowler. A copy of which was placed on file with the Secretary. The report was discussed and no outstanding items of significance were noted by the BOD during the review of the documents.

### Ongoing Business

Clearboard – The April issue was distributed week of May 8. Timing issues delayed this issue.

Invitational Ops 2006 – Discussed above at the N-scale and HO-scale Dept Reports. Meeting was successful.

Trailer/Containers – Further action needed. Jeff will coordinate.

Office Remodel – Options were discussed. Timing has to be determined because of NMRA Annual Meeting and other Club responsibilities coming up, as well as Summer activities.

Directors Insurance – Forms were obtained by Ed and completed by Bob as far as possible. Signatures were obtained and following attachment of other necessary documents by the Secretary will be send out.

2006 NMRA visit – The July 6 visit is cancelled at this moment but a bigger crowd is expected on the Saturday July 8. Carlos and Bob will work on a special issue of *The Clearboard* for this occasion.

Management Board – Follow up needed with Dick Kunig who offered to arrange for it.

### Old Business -

RR Crossing – Tabled until gates show up.

Plaster sink – Still needs to be resolved by Peal. In plans for 2006. Under Building Dept plans.

Locker and aisle space allocation – Discussed together with N-scale report and library development.

Shop Entrance – Still needs to be resolved with a concrete pad and ramp to be installed. Depends also on activities of County office.

### New Business –

#### New Members –

- One application was received. A returning member, Donald Riss, was accepted waiving the 30 day waiting period.

#### Other –

- Library – Discussed under N-scale business.
- Buildings & Grounds – It was noted that both inside the building as well as outside on the grounds around the building mess was building up again. Members were asked to clean up and special action will be taken prior to the NMRA Annual Meeting Visit.
- Tools & Supplies – Similarly to accrument of stuff both within the building as well as outside of the building, it has been noted to tools and supplies are lingering around. Owners are requested to take care of this otherwise they will be disposed off.
- Electrical Service Check – Complaints about power were checked out by Ed and Ray. No issues were found.

Motion for adjournment was made by Majury and seconded by Nalbhone with voice approval at 7:05 PM.

Department Heads, Development, Building and Membership to take the necessary steps and logistics. A tentative meeting is scheduled for May 13, time TBD.

RR Crossing – Tabled until gates show up.  
Management Board – Reactivated, Dick Kuning presented a plan which was accepted by the BOD.

Plaster sink – Still needs to be resolved by Peal. In plans for 2006. Under Building Dept plans.

Locker and aisle space allocation – Discussed together with N-scale report and library development.

Shop Entrance – Still needs to be resolved with a concrete pad and ramp to be installed. "Spring project"

G-scale loops – Tracks outside are back together. Trains can be run. When weather improves we will take an inventory of the equipment and see what we can work out to get it up and running again.

New Business –  
Other –

- Library – Lacked enough HO department participation. More HO department

- participation is requested, and Mike will coordinate this.
- Building & Grounds – Littering on our grounds from Home Depot is getting worse again. A letter will be send to Home Depot Manager, cc to Regional and Corporate Office and cc the County, regarding continuing debris on County grounds. Rodent traps are set in the building and on the grounds. Jeff is also arranging for professional help for the ant and wasp.
- Security Call List – There was a letter from the security system company regarding contact numbers. The list is checked and will stay the same for moment.
- Diaper Changing Stations – Carlos was able to get 2 diaper changing stations for a reasonable prize. He donated 2 stations to The Club. With the help of Ed Majury, the 2 stations have been put up in the 2 upstairs bathrooms on the Saturdays April 8 and 15.
- Locker Fees – Ed will print invoices and will get it mailed.
- Activities – Mike was asked to organize some activities. Upcoming activities are East Haven Trolley Museum Member Day April 29, and GATSME Invitational Ops May 20.

Motion for adjournment was made by Harris and seconded by Mike with voice approval at 8:58 PM.

### Summary May BOD Meeting

May 11, 2006

The BOD meeting was opened by Ray Russell @ 5:03 pm with quorum present.

The minutes of the April 15, 2006 BOD meeting were read by those present today. Motion was made to accept the minutes by Majury and seconded by Bowler. All present at the covered meeting voted in acceptance of the minutes.

Motion to accept the agenda as presented by Harriss and seconded by Peal as augmented with the following topic(s) (if any) added:

- Library
- Building & Grounds
- Tools & Supplies
- Electrical Service Check

**Reports -**

Building Department – An oral report was presented by Jeff Peal. Recent fixes applied within the building were discussed.

Development – Report was delivered by Bob. Details are available from his report, independently published and distributed to those present. Saturday visitor attendance slowed down further.

Treasurers Report – A detailed report, for the recently completed month, was delivered to the BOD by the Treasurer, a copy of which was placed on file with the Secretary. Included were Balance Sheet, and Profit & Loss Statements as well as a YTD Budget Comparison. Check detail & deposit detail for the month was also included. For specific

## Clearboard Commentary By Carlos Langezaal

Welcome to the June issue of the Clearboard. Due to switching jobs, participation in several Club activities and trips, such as to The Shoreline Trolley Museum and the GATSME invitational operation session, your Clearboard Editorial Staff has not been able to compile a May issue. However, in preparation for the NMRA visit in July, we are working on a Special Issue with some history of the Club which will include old pictures that were recently found. Members will get this special together with the combined July/August Clearboard.

In this edition, besides the usual Departmental Reports, we have 2 member contributions and a trip report. Eric Callender describes the physical differences between scales, and Mike Bowler describes the work involved in the new Summit area. Also a short report about the 7<sup>th</sup> TMRCI Invitational Operating Session, and a visit to the Member's Day of the Shoreline Trolley Museum.

In the Club documents, you will find a summary of the quarterly departmental HO meeting which took place in April, and summaries of the April and May BOD meetings.

The July/August issue will include a trip report of TMRCI's participation in the GATSME Invitational Operating Session, and hopefully we will have also a report about NMRA's Annual Meeting visit to our Club the 1st week of July. Even if you don't have a digital camera, scanning services are available for inclusion of any photo printed on paper, as you can see from the pictures in Mike Bowler's contribution.

Rest me to wish everyone a good summer time and lots of pleasure if you go out or on vacation. If it involves trains, please feel free to submit your story.

## The Model Railroad Club, Inc. Founder: Paul Mallery (1918-2004)

**Board of Directors**

President:	Ray Russell
Vice-President:	Bob Nalbhone
<i>Development Dept. Head</i>	
Treasurer:	Ed Majury
Secretary:	Carlos Langezaal
Director:	
<i>Building Dept. Head</i>	Jeff Peal
<i>Membership Dept. Head</i>	Mike Bowler
HO Dept. Head:	Martin Harriss
N Dept. Head:	Eric Callender

**Club Functionaries**

Government Liaison:	Bill Franklin
Office Manager:	Bill Jambor
Security Chairman:	Ed Majury
Civil Engineer:	Rich Cornell
Club Architect:	John Morris
Club Construction Supervisor:	Paul Preuss

**Activity Dept. Functionaries**

**HO Scale**

Layout Design Committee Chair:	Rich Cornell
Scenery Committee Co-Chair:	John Morris & Ira Deutsch
Electrical Committee Chair:	Martin Harriss
Operations Committee Chair:	Ed Small

Master Mechanic:	Ed Van Savage
HD&O Superintendent:	Bob Nalbhone
TN Superintendent:	Neil Petillo
Rahway River Superintendent:	Todd Heller

**N Scale**

Master Mechanic:	John Cicero
Electrical Dept. Chair:	Mark Juchniewicz
Scenery Chair:	Claude Kelsoe
Benchmark Chair:	Stephen Lawler

**Club Mailing Address**

PO Box 1146, Union, NJ  
 07083-1146  
**Telephone:** (908) 964-9724  
**Website:** www.tmrcki.org

**E-mail Addresses**

<b>Board of Directors:</b>	TMRCi_BOD@TMRCi.org
<b>Clearboard Editor:</b>	TMRCi_Clearboard@TMRCi.org
<b>Webmaster:</b>	Webmaster@TMRCi.org

## Jersey Shore & Western Railroad Company News

By Eric Callender

Well, I don't know about anyone else, but I had a lot of fun at the 2006 TMRCI Invitational Operating Session. Despite some minor electrical problems, we got the trains rolling and ran rudimentary operations with members and visitors. There were a few visitor/guests and even one guest who operated on the N-Scale layout the whole session. I also noticed many guests photographing and videotaping our layout. All in all I will state that the N-Scale Dept. presented itself respectably. Some members expressed discomfort with out the car cards but they didn't realize that the database they are stored in can be printed onto cards at any time. I prefer to operate prototypically with lists of cars and numerical locations where they are to be delivered. Hopefully, the members can become comfortable with this "21<sup>st</sup> Century" method.

The work on the Library area will continue full force. The commitment of the N-Scale Department to have the Library shelf/locker units constructed will be met when the book shelves are in the units. As previously stated, then the boxes of books, magazines, etc. can be moved out of the upstairs gallery area. The materials will be organized, put on the shelves, and then cataloged into a list or database. Thus far the impetus of organizing the stored materials into a Club library has fallen solely upon the N-Scale Department. Hopefully the **whole club** will assist in the remainder of this process.

Upon moving the material from the upstairs area, construction of the proposed N-Scale layout staging yards work can begin. The addition of the 'Buffalo' interchange/staging will help greatly with our operations, especially for the upcoming NMRA visit. I expect every member of the N-Scale Department to bring in their BEST modeling, structures, custom cars, detailed pieces, etc. and to help install new backdrops, signals and spruce up the scenery on the layout so that we leave a tremendous impression on the NMRA visitors. The visit is scheduled for the beginning of July, and we must have everything completed by June 24, 2006, so come to me with any plans A.S.A.P. so we can integrate things into the layout.

Finally, I noticed on the Dues Report that only eight (8) members of the department had paid the dues by the beginning of the month. I encourage everyone to pay dues promptly so annoyance can be avoided.



Can trees have a bad hair day? Foliage and rock along an undisclosed location of the JS&W right-of-way.  
Photo by Carlos Langezaal.

All present at the covered meeting voted in acceptance of the minutes.

Motion to accept the agenda as presented by Harriss and seconded by Peal as augmented with the following topic(s) (if any) added:

- Library
- Building & Ground
- Security Call list
- Diaper Changing Stations
- Locker # List
- Activities for members

### Reports -

Building Department – A written report was presented by Jeff Peal. Door at parking lot side is latched at this time, but needs to be further fixed. As it is a security issue is a high priority. Jeff will call City Fire to have fire system checked to see if water in pipes is result of a leaking valve or for other reasons.

Development – Report was delivered by Bob. Details are available from his report, independently published and distributed to those present.

Treasurers Report – A detailed report, for the recently completed month, was delivered to the BOD by the Treasurer, a copy of which was placed on file with the Secretary. Included were Balance Sheet, and Profit & Loss Statements as well as a YTD Budget Comparison. Check detail & deposit detail for the month was also included. For specific details, please consult the reports directly. Copies of the detailed report are also available from the Treasurer at the Club. No outstanding items of significance were noted by the BOD during the review of the documents. In Club News in the Clearboard a note will be posted regarding the closure of the Wachovia account.

N Scale – A written annual report was delivered by Eric. A copy of which was placed on file with the Secretary. No outstanding items of significance were noted by the BOD during the review of the documents. N-scale will finish the library storage soon. Bob will look into a system for making the index. We will work on moving library materials by the end of April.

HO Department – A written report was delivered by Martin. A copy of which was placed on file with the Secretary. No outstanding items of significance

were noted by the BOD during the review of the documents.

Membership - A membership report was delivered by Mike Bowler. A copy of which was placed on file with the Secretary. The report was discussed and no outstanding items of significance were noted by the BOD during the review of the documents. A list was provided to the N and HO Dept Heads with members who are 1-2 months behind in dues for follow-up. Mike will work with Bill Jambor to start up again the work on a Membership Directory.

### Ongoing Business

Clearboard – The March issue was distributed week of March 27. It was presented in a new Format. Bob and Carlos would like to make the June issue a special issue, especially with the NMRA Annual Meeting visits early July. Therefore, a call for contributions was placed.

Invitational Ops 2006 – Mike will work with Martin and Pete on the activities associated with the Invitational Ops.

Trailer/Containers – Needs to scrapped. Jeff will research if it has a Title and does the trailer have a value. Based on the outcome of that, Jeff will take appropriate actions. Regarding the costs, Jeff will provide a copy of the receipt to Bob for appropriate action.

Website maintenance – The N-scale pictures are back up. We have to think of changes to the website. Update it with more information, new pictures etc.

Office Remodel – Steve Lawler to busy to assist. Ed works with East Coast to look if they have office material that we can use in our office.

Directors Insurance – Forms were obtained by Ed and handed to Bob for completion. Ed will send them out when filled out and signed.

Shop Safety – At this moment there is a table saw with a safety guard in place. Can be taken off agenda.

2006 NMRA visit – Eric informed the BOD that recognition of accomplishment by the NMRA is the ultimate reward in our hobby. Eric recommended that both the N-scale and HO-scale to shoot for this as it will be good publicity for the Club. A Committee will be established with the

## Summary HO Quarterly Departmental Meeting

by Carlos Langezaal

The quarterly HO Department meeting was opened by Martin Hariss @ 4:00 pm with quorum present. Secretary for the meeting is Carlos Langezaal.

Agenda accepted without any additional topics.

### Review and discussion of HO Department Annual Meeting 1/7/2006 Report

The minutes of the January 7, 2006 Annual HO Department meeting were read by those present today. Motion was made to accept the minutes by Pete Ezzard, seconded by Bob Nalbhone. All present at the covered meeting voted in acceptance of the minutes as written.

### Reports of the Committee Heads

- **Electrical** (Martin Harriss) – Rich Cornell has been working on Gilberton East. Work is progressing well, while Paul Preuss is working on the block sections in Gilberton. Ed Majury has been looking into issues with the radio control of the throttles.
- **Scenery** (Martin Harriss for John Morris) - John Morris is working on the scenery in Pittsburgh. Bob Nalbhone commented that we have a maintenance issue. Trees are drying out and in a few places the top wire is loose. Also, new crossing signs created by Ira Deutsch have been damaged in several places. We need to work on this, repair the damage and be more careful moving around on the layout.
- **Master Mechanic** (Ed Van Savage) – The scale has returned and Jeff will work with Ed to get a secure place for the equipment of the Master Mechanic.
- **Super Intendents** (Bob Nalbhone) – Sessions are working out well under the new schedule

although many Tuesdays we are still short handed for operators.

**Operations** (Ed Small) – The project has been picked up again in April. With regard to way billing, progress is being made integrating the systems proposed by Peter Ezzard and Ed Small. It is noted that we need more way bills.

### Old Business

**HO Department By-Law Change** – This is resolved with vote at last meeting.

### New Business

- **East End Electrification** – Layout Committee met in February. It was observed that we have in several places no opportunity at this moment to turn trains around. The possibility of electrification on the East End was discussed with various members voicing their opinion. Is tabled for further discussion at the next meeting.
- **Dispatch Panel** – Pete proposed to have a dispatch panel on display for educational purposes. We need to figure out which type of panel and where it can be placed. Tabled for future discussion and becoming part of project planning.
- **NMRA Visit** – The upcoming visit during the annual meeting of the NMRA in Philadelphia was discussed. It was noted that we will need a good representation of members during that day.
- **Clean Up** – Members are needed to move some materials around. Volunteers offered their assistance.

### Adjournment

Ed Small moved a motion for adjournment, and was seconded by Nalbhone. Meeting adjourned at 5:05 PM.

## Summary April BOD Meeting

April 15, 2006

The BOD meeting was opened by Bob Nalbhone @ 6:53 pm with quorum present.

The minutes of the March 11, 2006 BOD meetings

were read by those present today. Motion was made to accept the minutes by Majury and seconded by Bowler.

## HO Department News

By Martin Harriss

On May 6th the HO Department successfully hosted the 7th "Op 'til you Drop" session. (Hard to believe we've been doing this for seven years!) On the previous Saturday, crews were hard at work cleaning the layout and checking equipment. As a result, the layout ran smoothly for the event, apart from a DCC problem that was traced to a faulty command station. Once the offending equipment was replaced, there were no problems for the rest of the session.

We had 31 guests signed up for the event, and about 25 showed up on the day. We ran two operating sessions, one in the afternoon and one in the early evening, with a barbeque in between the two sessions.

Although the scene at the Club at times appeared to be rather chaotic, with people packed like sardines in the Gilberton aisle, just about all the visitors said they enjoyed the session. On return from the session several visitors emailed Club members to tell them what a good time they had had and to thank us for organizing the session.

I'd like to thank the following members for helping to run the session: Linda Borzak, Mike Bowler, Mike Briante, Ira Deutsch, Bill Franklin, Bill Jambor, Don Kern, Carlos Langezaal, Ed Majury, Jeff Peal, Joe Russell, Ray Russell, Ed Small and Joe Santomauro. Please forgive me if I've forgotten anyone!

Special thanks to Dick Kunig for doing a lot of the running around first thing on Saturday, and finally a big thank you to Pete Ezzard and Bob Nalbhone for organizing the event. It's events like this that can get us noticed.

Also in the news this month is the quarterly HO Department meeting, which was held on April 15th. The main item of new business on the agenda was a discussion of whether or not the HD&O line between Hoboken and Dover and Gladstone should be electrified, as was the prototype DL&W. If the line is not electrified, it will have implications in the design of the layout, as would then have to provide facilities to turn motive power at Dover and Gladstone. There was considerable discussion of the pros and cons of electrification, and of whether we should build only the cat poles or if we should also install the trolley wire. The latter would represent a considerable investment of time an effort by members of the HO department, and might also have implications for clearance and access to parts of the layout.

This is a topic that needs to be discussed within the HO department within the coming months and a decision reached that will best serve the Department going forward.



Trenton Northern Transportation & Light Co. interurban #415 passes its arch enemy, a GMC bus, at the Summit depot.. Is it our imagination, or does it appear as though the depot is not sitting on the ground correctly? Photo by Carlos Langezaal.

# N-scale and Physical Differences between Scales

By Eric Callender

An acquaintance of mine, who models in another, larger scale and I were discussing the physical differences between the scales and how these differences affect the construction and operations in the respective scales.

The matter was brought up because as the N-Scale layout at the Model Railroad Club, Inc. has grown, the need to add interchange yards for movement to and from the layout has become critical for operations. Some of the main reasons for this are the physical properties of N-Scale modeling.

N-Scale is 1:160, meaning in that in one (1) actual foot of space 160 feet of modeling can be done. This allows many scenery features, mountains, buildings, roads, bridges, etc. to be packed into a small area. Conversely, should one choose to model open or empty spaces N-Scale is excellent; an actual 33 foot length represents a whole mile in N-Scale. Since our layout represents the industrialized Northeast of the USA where space is at a premium we went the former route and chose to fill our spaces in urban, industrial or suburban scenery. When asked why a yard is necessary when freight operations can be run point to point between industries the need for clarity regarding the spacing of buildings and track is apparent.

The difficulty in coupling and especially uncoupling equipment in such a small scale creates the propensity to run cuts of cars instead of dropping off a single car. On N-Scale layouts the most visible freight and passenger movements involve multiple cars. Due to the size constraints of the equipment, coupled with the close proximity of the structures, some of the operational performance of local freight is sacrificed for interesting scenery. Additionally the size of rails and the rail contact area has an effect on the performance.

Remember one (1) millimeter of actual length is the equivalent to one half (1/2) foot in N-Scale. The fact that the contact area of our [code 55] rail with each wheel, including power pickup wheels, is much less than that means that electrical pickup and even the ride characteristic is very seriously affected by the gaps and uneven rails which occur as a natural result normal expansion or contraction of the building due to temperature. Additionally even the daily oxidation of the metal in the rail reduces the power and DCC control signals transferred to N-Scale engines during operations. And let's not forget the dirt and dust which settle on the rails daily.

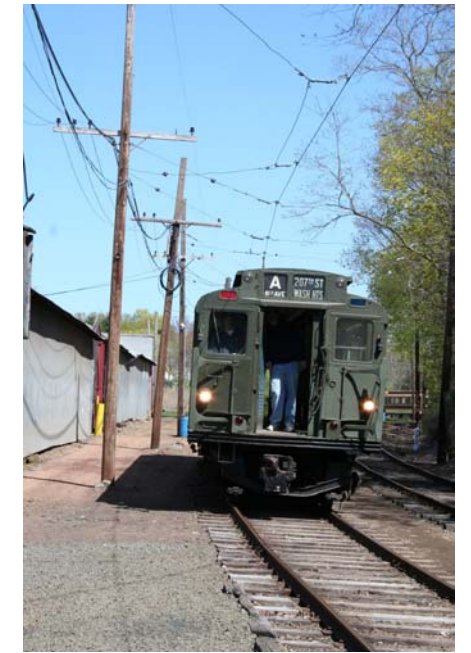
All these physical properties can affect the operations so that even a small, scenery dense area, such as Newark on our layout could take over an hour to switch. Therefore to keep operators interested and busy a larger proportion of operations must involve express or through freight and passenger operations than would occur on a larger scale layout. This is only possible if you have yards to move the cuts of cars to and from.



Above: Yard of the JS&W railroad. Photo by Carlos Langezaal.



Left: Paul Preuss gets his hands on the controls of a trolley under the watchful eye of "Mr. Conductor", Pete Ezzard.



Right: No, you can't take the "A train" to East Haven, but during special events, the museum brings out several former NYC subway cars, including this former original IND car.

Photos on this page by Carlos Langezaal.



Above: Trolley 316 waiting in the loop for permission to come on the mainline. The ride was special on this single axle trolley. The owner of the trolley, standing on the door steps, has rebuild the trolley to its original status with the help of several other trolley enthusiasts over a period of 50 years. The trolley is only used 1-2 x a year during special occasions.



Left: TMRCI member Dick Kunig at the controls of Trolley #2001.



Right: A new piece of the Museum collection. Trolley #71 originating from Sweden is parked in a barn waiting for members to start working on it.

(Continued from Page 9)

The track has not been spared, either. Mice feces have made the track even dirtier than usual and track cleaning trains are being operated with increasing regularity, even being dispatched as “work trains” during operating sessions. Locomotives are making more frequent visits to the cleaning track as well.

“I’ve been wanting to hire an exterminator for some time but the Board won’t appropriate the funds because the problem is seen as a part-time one that can’t be solved,” said a frustrated vice president Bob Nalbene, who feels that even if the mice do leave when the weather turns warm the Club still has a problem half the year.

N Scale Department Head Eric Callendar has also raised concerns, as the mice can really wreak havoc on the N scale layout. Building Department Head Jeff Peal and Membership Department Head Mike Bowler have set traps and a some mice have been caught, but the problem persists.

“I implore members to not leave food or open soda cans lying around and make an extra effort to keep the building clean,” said Nalbene. “That includes making sure the garbage pails are emptied and new bags placed in them. They should be washed with warm soap and water every once in a while, too. Floors need to be swept and mopped regularly. Mice feces, as is the case with any animal, carries diseases.”

As far as the layouts are concerned, Nalbene said simply: “Clean, clean, clean, clean, clean! Then clean some more.” This won’t help the HO Department Scenery Committee, which faces a daunting repair task with the NMRA national convention only weeks away.

Many of the “supertrees” have been damaged and there is already a long list of scenery items needing attention.

END

## Visit to the Shoreline Trolley Museum

by Carlos Langezaal

On Saturday April 29, 2006, members of TMRCI were invited again to attend the Annual Members Day of the Shoreline Trolley Museum in East Haven, Connecticut. Unlike 2005, this year we had great weather and many different equipment was brought out for the members and other attendees to enjoy. As usual, a catered lunch was offered and we did take as many rides in different trolleys and amended subway cars as possible. Enjoy the photos highlighting the day below and join us on our next trip next year! Thank you to Pete Ezzard for another great opportunity!



**Left:** Bending the iron—traction style! Pete Ezzard uses a special pole to remove a small block in order to switch tracks in the yard. **Right:** What’s in your garage? Two trolleys repose in one of the museum’s car barns. Photos by Carlos Langezaal.

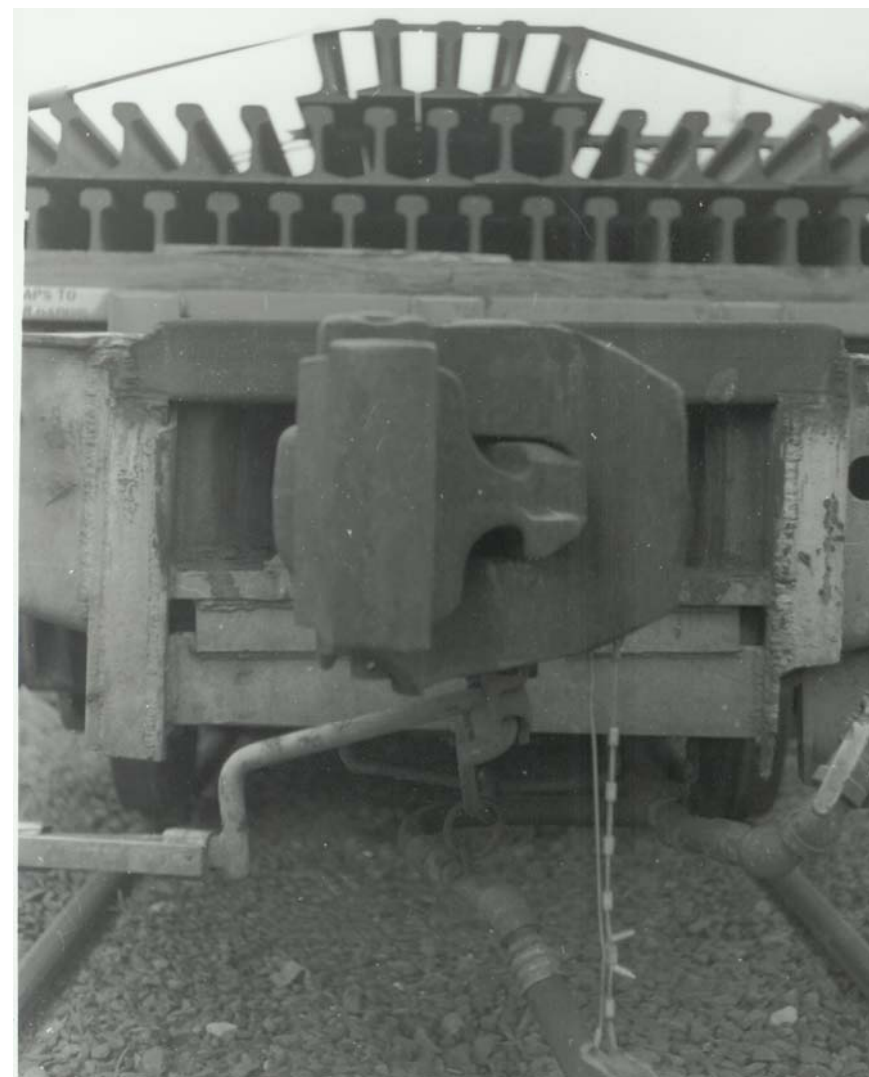
## Tall Timber

By Mike Bowler

Well, The dancers have just pushed through the main yard at Summit, and are now heading toward the last set of switches, past the station limit point, just east of Summit. From where we last logged in from, this is quiet a haul. Forman thinks it’s about ten miles or more. Sure seems like more, but more is better! I think it the work on the siding and storage tracks. We keep laying timber and pig iron, yet its seems we did `not move that much more. Sooner or later though, the progress starts to add-up. Fifteen switches, three main lines and three storage siding-tracks, makes up the bulk of this high speed interchange, plenty of action around rush hour. Then the mains narrow down to the platform area. The crew liked this area best. Not as far across to work as up in the yard area, the Chief engineer say’s we are ahead of schedule, so the Forman gave the crew some extra time, before heading east to the next set of four or five. That cuts the main down two lines moving due East.

The crew took a camera along this time, and as the saying goes one picture is worth a thousand words. So enjoy!

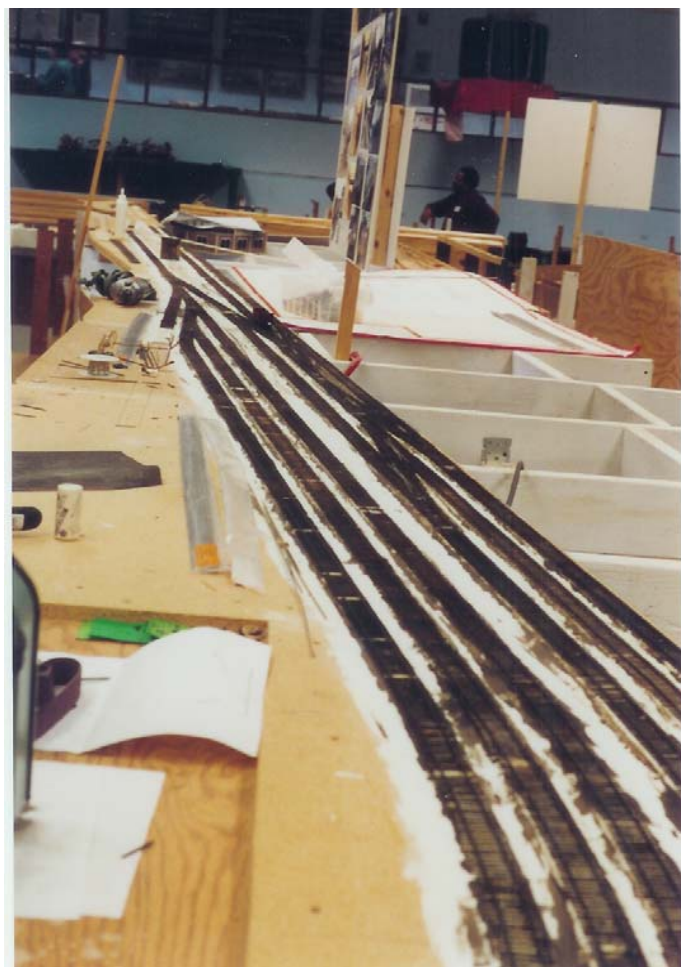
Till next log-in then  
Timber



**Above:**Comin’ at ya! End view of prototype flat car with rails at Oakdale, NY on the Long Island Rail Road. Photo by Mike Bowler.



**Above:** Mike Bowler's scratchbuilt rail and tie car in the new Summit area. Photo by Mike Bowler.



**Left and Right:** Two views of new Summit yard and mainline trackage east of the station. Photos and trackwork by Mike Bowler.

## Club News

Compiled by The Clearboard Staff

### SEVENTH ANNUAL OPERATION INVITATIONAL DRAWS TWENTY-SEVEN GUEST OPERATORS

Twenty-seven guest operators from as far as Massachusetts attended the Seventh Annual Invitational Operating Session, held on May 6th.

As has become customary, there were two operating sessions with a barbecue break in between. For the first time since the event debuted in 1999, the N scale layout was also in operation. On the HO side, the weekday first trick and the weekend second trick schedules were used. After some glitches were worked out on the HO side (it turned out that the Club's Digitrax DCC "Chief" unit had been mysteriously swapped out with another unit and the replacement had a chip that was improperly seated) the sessions went ahead without major mishaps.

Ironically, the two principal event organizers, Club vice president Bob Nalbene and former HO Department Head Pete Ezzard were unable to attend due to family obligations. Filling in for them doing orientation, last-minute set up and running the sessions were Club secretary Carlos Langezaal, Dick Kunig and current HO Department Head Martin Harriss. Club president Ray Russell and treasurer Ed Majury handled the technical support while Membership Director Mike Bowler served as "Executive Chef."

One change that was made this year was to lengthen the break in between sessions to three hours. This was done to allow members enough time to restage the railroads and still enjoy socializing at the barbecue, although some felt that this was too long a break. The event organizers said they would review this for next year.

Feedback from the guest operators was very positive. Keith Shoneman from Acton, Massachusetts wrote to Pete Ezzard via e-mail:

"I want to thank you and all of your members for a great day of railroading on Saturday...Your crew were most gracious hosts and I commend you folks for having an annual meet like this. I know it takes planning and effort on your part, but it is a truly worthwhile event."

This view was shared by Bill Venman of the Amherst Railway Society who wrote in part:

"...thank you first for the invitation and second for the session itself. We had a van load of operators from the Amherst Railway Society and we thoroughly enjoyed the day."

The invitational operating session has become a popular venue for model railroaders from up and down the east coast who take operations seriously. This year's event was the first of three major model railroad events in our area in 2006. The other two are the NMRA National Convention in Philadelphia in July (the Club is a featured tour) and the Northeast Region convention in Parsippany in the fall.

A special "thank you" goes out to all members that helped to make this a successful event.

### MICE STILL A MENACE TO BUILDING, LAYOUTS

For some months mice have been seen scurrying around the building. Historically, this has been an issue during the colder months and less so during the warmer months when the mice return outdoors. So far this year, however, the problem doesn't seem to be showing signs of abating.

The HO layout has been hit hard. The rodents find the scenery a good source of food and the tunnels a good way to get around. All along the right of way are pieces of foliage - some that are large enough to derail a train. Consequently, a visual inspection of the layout and, if necessary, vacuuming must now be done prior to operating sessions and Saturday public hours.

(Continued on Page 10)