

HO DEPARTMENT GUIDE



Passenger trains stand by ready to take commuters home for the evening rush hour at Pittsburgh passenger station. Notice the newly installed platform roofs, courtesy of Ira Deutsch. Also note the incandescent lighting under the platforms and the packages ready to be placed on the next long distance train arriving at the station. Photo by Don Kern.

INSIDE THIS ISSUE

- 2 About The Department
- 3 History of The Club
- 4 About Our Railroads
- 5 Layout Map

Welcome to the HO Department of the Model Railroad Club. The HO Department is responsible for our largest layout at the Club. The layout is not the product of any one individual's effort, rather it was and will be produced by a collaboration of past, present and future members of the HO Department of The Model Railroad Club. Every member can contribute to the success of the Department. It is hoped that this Guide will provide each of you an insight into the workings of the Department and give you ideas which area you might wish to contribute.

The Department's main goal is to design, build, and operate a model railroad display in as true to prototypical manner as possible. Operations are the test that all of our other work has been successful. The Department hosts prototype operating sessions every Tuesday night from 7 p.m. to 10 p.m.

The Department is governed by a set of by-laws, a copy of which is available from the Department Head. The HO Department Head represents the Department's interests at the Club's Board of Director's meetings and is responsible for organizing the committees that actually do the work of building, maintaining, and running the railroads. The following table of organization outlines the structure of the HO Department.

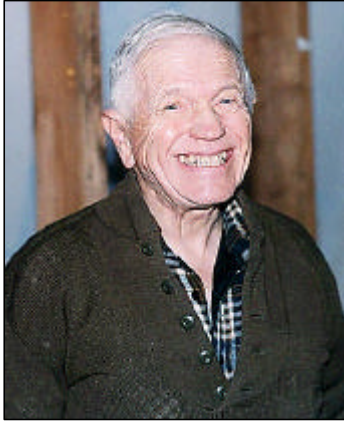
HO Department Head	
<u>Operating Groups</u>	<u>Building and Maintenance</u>
Master Mechanic	Layout Design Committee
Railroad Superintendents	Electrical Committee
Operations Committee	Scenery Committee
	Trackwork Committee
	Layout Construction Committee

Each Committee is responsible for developing, implementing and overseeing the Department's Standards for each of their respective areas of concern, and is chaired by a department member. For instance, the Master Mechanic is responsible for ensuring that railroad cars placed on the layout meet all applicable standards. The Railroad Superintendents are responsible for the operations of their respective railroads during Tuesday operating sessions. There are many areas of overlap, and a department member may participate in as many committees and activities as interest and time allow.

Quarterly department meetings are held in January, April, July and October. The various committees also hold meetings throughout the year. All meeting times are published in the *Clearboard*. In addition, work is always taking place on the railroad. I encourage each and every one of you to participate in Department Activities. I hope this Guide helps orient you to our Department and makes it a little easier to navigate your way around the Club.

Peter Ezzard
HO Department Head
January, 2001

CELEBRATING OVER A HALF-CENTURY OF RAILROAD MODELING EXCELLENCE



Paul Mallery, 1999

On February 17, 1949 Paul Draper, Walter Kalin, Paul Mallery and Ken Robinson founded the Summit-New Providence Model Railroad Club. It was “temporarily” located in Paul’s basement until more suitable permanent quarters could be located. The

temporary arrangement lasted over twenty years, until final abandonment in 1972. Over 1700 feet of a planned 3300 was in operation when the first layout was abandoned.

Groundbreaking began at our present site in 1972. The building that houses our model railroads and our expansion has been designed, built and paid for by club members, private donations and show admission fees over the past twenty-eight years. The Club is lucky to count among its members a licensed architect, a licensed civil engineer, several construction tradesman, as well as numerous members willing to contribute their labor to build and expand this model railroad center. Upon completion of each section of building, it is donated to the Union County Park System. The Club is an activity of the Park System, although the Club assumes all costs associated with building, maintaining, and expanding the facilities. In return, The Model Railroad Club operates a model railroad center for the benefit of the public and those interested in model railroading.

In 1952 the club formally changed the mainline railroad name to the fictitious Hudson, Delaware & Ohio. Previously the Club used the name Great

Northwestern, another fictitious railroad that was Paul’s “home-road” name. Work commenced on the Trenton Northern in 1954. That makes the HD&O fifty-two years old and the TN fifty years old. Few real-life railroads are operating under the same name for as many years!

The HD&O and TN survived the move to our new headquarters. The Mauch Chunk Terminal and Rahway River railroads soon joined the main HO layout as planned interchange partners. In 1976 work started on the N scale gallery layout. Groundbreaking for the second phase of our model railroad empire was in the spring of 1993. This expansion will more than quadruple the size of our main HO layout. Construction of benchwork for the next section of the HO layout is expected to begin early in the year of 2000.

The original club members and layout were groundbreakers in the hobby. Use of X-sections, Delaware Cab Control, early use of list system waybills and emphasis on prototype operation are among the contributions that the Club has made to the hobby, either by being the first to use them or by being early proponents of the items mentioned. Paul Mallery has actively contributed to the model railroad press over the past fifty years, authoring several hobby related books and numerous magazine articles. Many of the ideas for his articles and books have arisen from his activities with the Club. More recently Phil Monat penned an article that was published in the May, 1997 *Model Railroader*. Michael Hauptmann has done an excellent job with our website at www.tmrcl.com. Allen Keller’s video documentary about the Club was released in the summer of 1999. With all of the great model railroading to be done in the new addition, and long-range plans for a third and fourth addition, the Club should continue to be a major presence in the world of model railroading for many years to come.

About our Railroads....



Each of our railroads interchanges freight cars with one another. On the HO layout four railroads are currently modeled. The Hudson Delaware & Ohio Railroad, The Trenton Northern Transportation and Light Company, The Rahway River Railroad, and the Mauch Chunk Terminal Railroad Company. The Club also operates the Jersey Shore & Western Railroad, an N-scale railroad located in the upstairs room by the balcony.

The **Hudson, Delaware & Ohio Railroad** is a class 1 mainline railroad which runs from Hoboken, NJ to Pittsburgh, Pa. When we expand into the next section, over twenty mainline towns and several towns along branch lines will be modeled. Currently the modeled portion of line is from Gilberton, Pa to Pittsburgh, Pa. with a branch from Summit to Gladstone.

HD&O Passenger Train Just East of Summit Station

The **Trenton Northern Transportation and Light Company** (TN) is an interurban railroad running from Trenton, NJ to Northampton, Pa. Overhead wire provides electricity for its freight and passenger motors. There are two branches off its passenger mainline. One branch serves customers in Bernardsville, N.J and one branch serves customers in Jim Thorpe, Pa. When the layout expands the TN will model two additional towns, Princeton and Lawrenceville.

The **Rahway River Railroad** is a shortline railroad operating between the towns of Kenilworth, Summit and Allentown. Customers are served on an as needed basis and given a level of service not seen on larger railroads. In the next section the Rahway River will serve a steel mill along its line.



Trenton Northern Combine 501 stops at Reading Station, Trenton

The **Mauch Chunk Terminal Railroad** is a small industrial switching railroad located in Jim Thorpe alongside the old Morris Canal. At present it is uncompleted. When finished, its small locomotives will be seen in the streets of Jim Thorpe switching sidings of the industries in town.

Facts about HO Layout at The Model Railroad Club -

- There are over 10,000 trees on our layout .
- Over one actual mile of track has been handlaid.
- There are over 500 relays, ten miles of wiring, and five computers used to route power and trains.

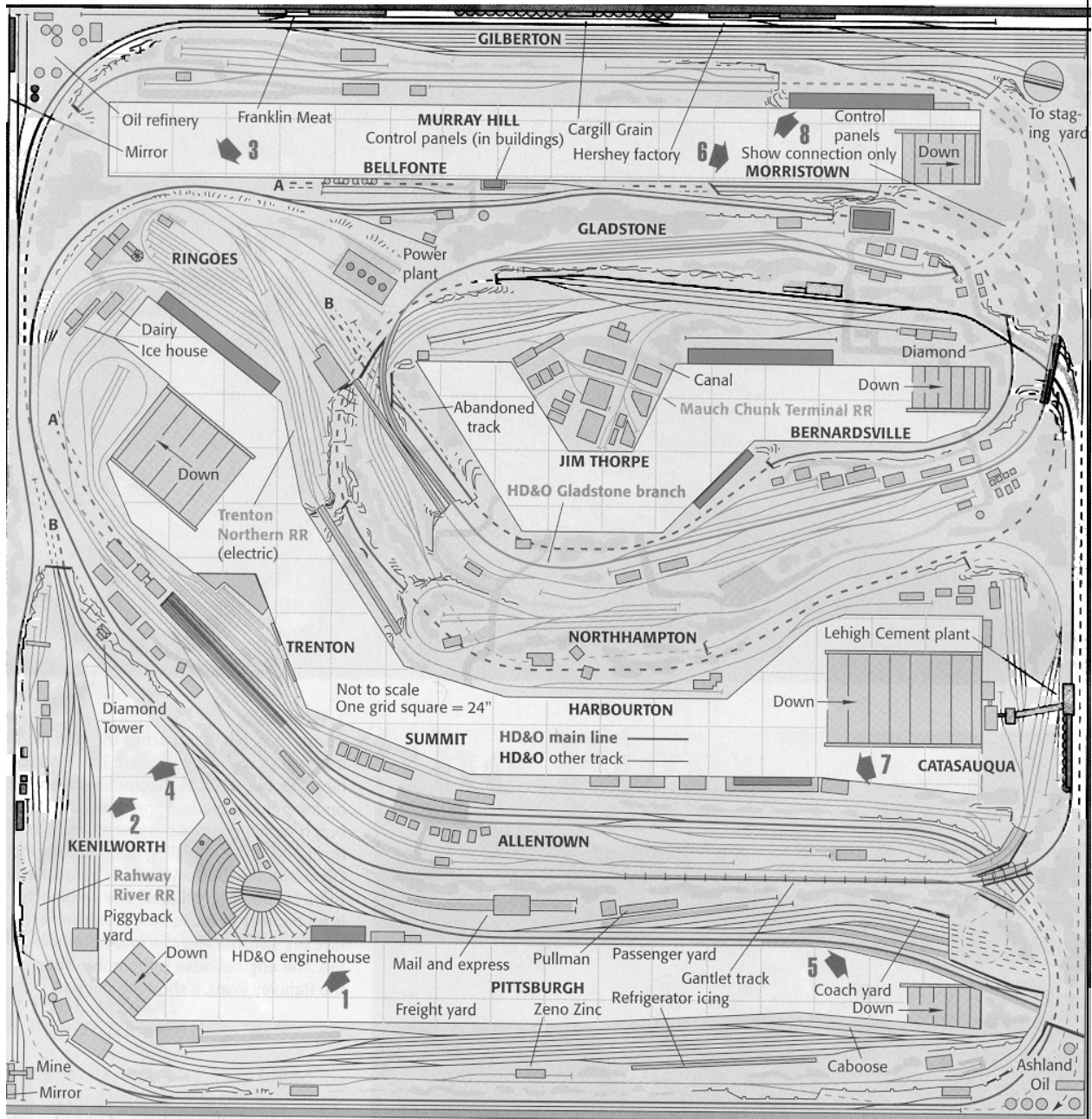


Illustration by Robert Wegner

Layout Drawing Originally Appeared in **Model Railroader** May 1997. Used with permission.

Map of present HO layout at the Model Railroad Club of Union, N.J. The current size of the layout is approximately 40 feet by 40 feet. Four separate model railroads are depicted: The Hudson, Delaware & Ohio (HD&O), the Trenton Northern Transportation and Light Co (TN), the Rahway River Railroad and the Mauch Chunk Terminal Railroad. In the next section, the layout will extend to the right of the map. The final phase II size will be expanded to approximately 60 feet by 120 feet. Plans for phases III and IV are not yet completed.

Publications of HO Department

Over the years many internal publications about the HO Department have been developed by our members. These works help explain the intricacies of the Department and its various areas more completely than this brief guide.

All not in development are available from the HO Department Head. Request your copies of publications that interest you from him or her. A nominal fee may be charged to cover the costs of duplicating or producing your copies.

- 1) HO Department Guide
- 2) HO Department By-Laws
- 3) HO Department Operating Guidebook and HORAC rulebook
- 4) Trenton Northern Guidebook
- 5) Rolling Equipment Standards
- 6) Electrical Standards
- 7) Trackwork Standards
- 8) Track Plan
- 9) Trenton Northern Timetables
- 10) Hudson, Delaware & Ohio Timetables
- 11) Rahway River Timetables
- 12) Hudson, Delaware & Ohio Guidebook (in development)
- 13) Rahway River Guidebook (in development)
- 14) Mauch Chunk Terminal Guidebook (in development)